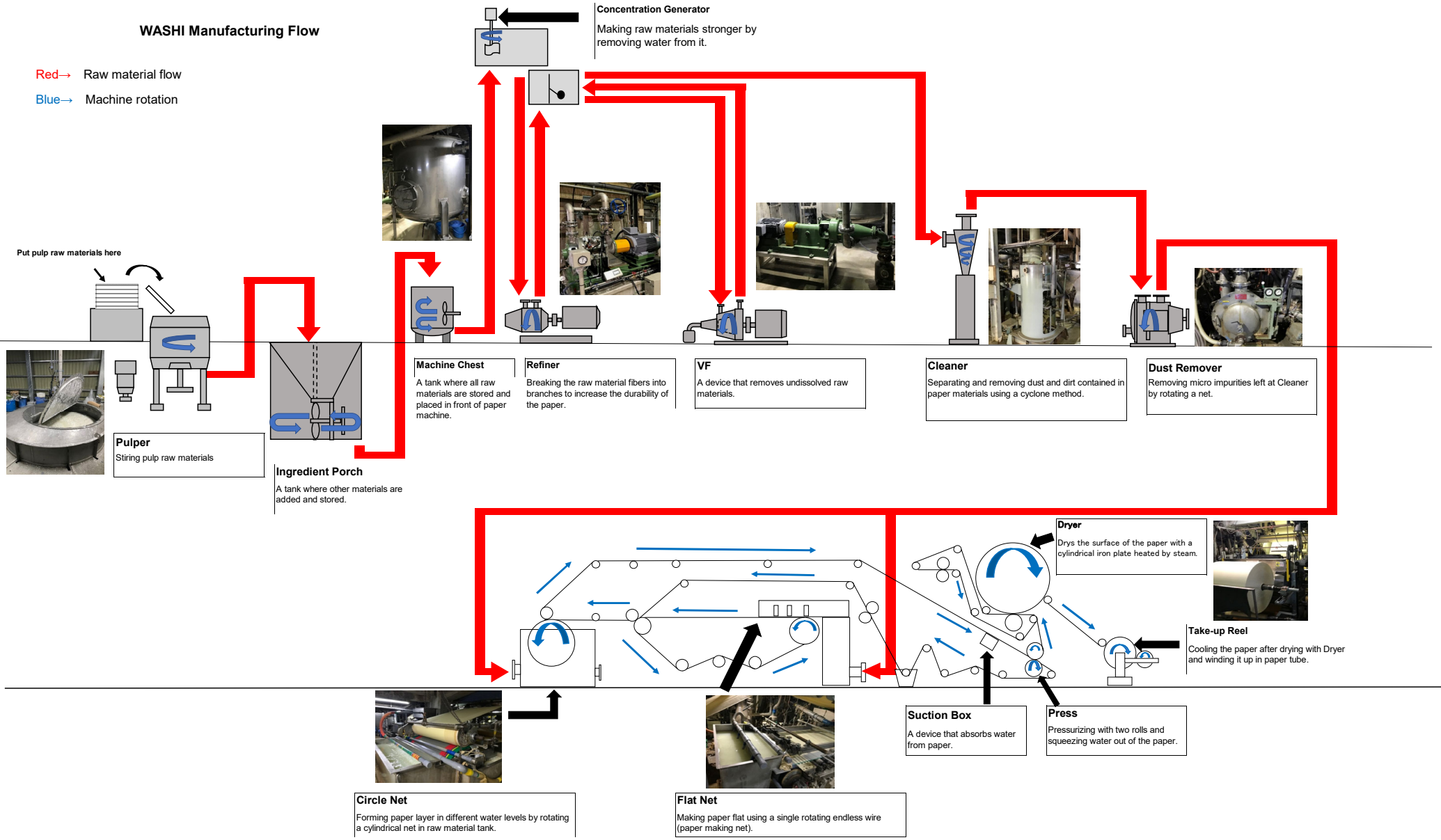


WASHI Manufacturing Flow

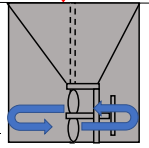
Red → Raw material flow
 Blue → Machine rotation



Put pulp raw materials here



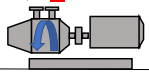
Pulper
 Stirring pulp raw materials



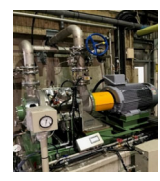
Ingredient Porch
 A tank where other materials are added and stored.



Machine Chest
 A tank where all raw materials are stored and placed in front of paper machine.



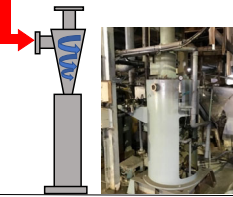
Refiner
 Breaking the raw material fibers into branches to increase the durability of the paper.



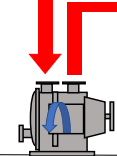
VF
 A device that removes undissolved raw materials.



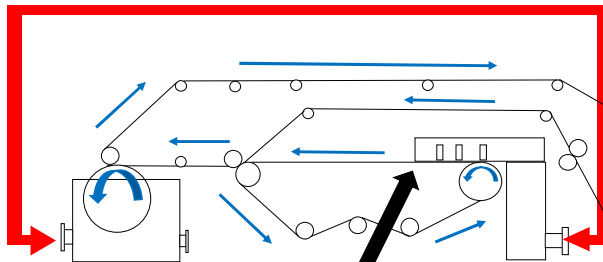
Concentration Generator
 Making raw materials stronger by removing water from it.



Cleaner
 Separating and removing dust and dirt contained in paper materials using a cyclone method.



Dust Remover
 Removing micro impurities left at Cleaner by rotating a net.

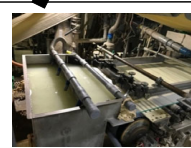


Suction Box
 A device that absorbs water from paper.

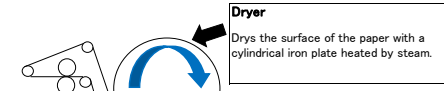
Press
 Pressurizing with two rolls and squeezing water out of the paper.



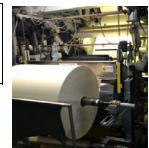
Circle Net
 Forming paper layer in different water levels by rotating a cylindrical net in raw material tank.



Flat Net
 Making paper flat using a single rotating endless wire (paper making net).



Dryer
 Dries the surface of the paper with a cylindrical iron plate heated by steam.



Take-up Reel
 Cooling the paper after drying with Dryer and winding it up in paper tube.